

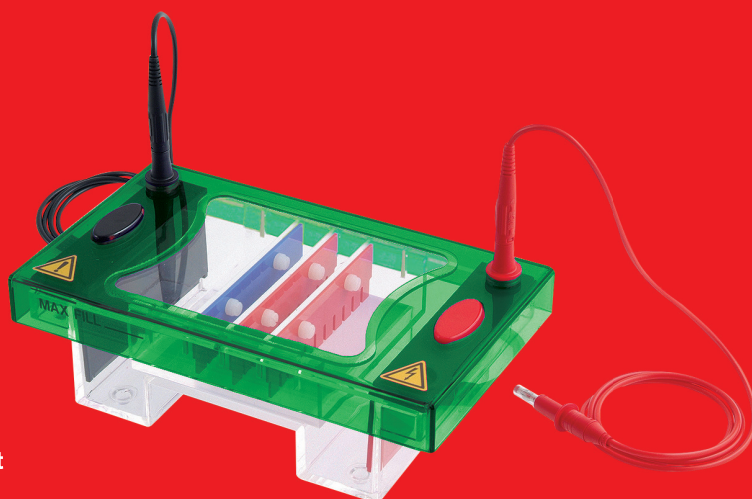
EHS1200

Midi horizontal unit

- **Gel dimensions** 10x7cm
10x10 cm
- **Buffer volume** 300ml
- **Sample Capacity** 100
- **Unit Dimensions** 22x12.5x9 cm
- **Recommended power supply**
 - EV1450
 - EV2310

EHS1200 allows more samples to be resolved per gel without a significant increase in buffer or gel volumes.

100 samples per gel can be resolved making this unit ideal for those routinely checking medium numbers of samples over short to medium gel run lengths.



Ordering codes

Code	Description
EHS1200-SYS	Midi horizontal unit, 10x7 cm casting tray, 10x10 cm casting tray loading guides, dams 2 combs: 16 sample, 1 mm
EHS1201-SYS	Midi horizontal unit, 10x7 cm casting tray loading guides, dams 2 combs: 16 sample, 1 mm
EHS1202-SYS	Midi horizontal unit, 10x10 cm casting tray loading guides, dams 2 combs: 16 sample, 1 mm

Combs

Code	Description	Sample volume
EHS1200-C8-0.8	0.75 mm thick, 8 sample	30 µl
EHS1200-C12-0.8	0.75 mm thick, 12 sample	17 µl
EHS1200-C16-0.8	0.75 mm thick, 16 sample	12 µl
EHS1200-C25-0.8	0.75 mm thick, 25 sample	7 µl
EHS1200-C8-1.0	1 mm thick, 8 sample	41 µl
EHS1200-C12-1.0	1 mm thick, 12 sample	23 µl
EHS1200-C16-1.0	1 mm thick, 16 sample	16 µl
EHS1200-C25-1.0	1 mm thick, 25 sample	10 µl
EHS1200-C8-1.5	1.5 mm thick, 8 sample	61 µl
EHS1200-C12-1.5	1.5 mm thick, 12 sample	34 µl
EHS1200-C16-1.5	1.5 mm thick, 16 sample	24 µl
EHS1200-C25-1.5	1.5 mm thick, 25 sample	15 µl
EHS1200-C8-2.0	2 mm thick, 8 sample	81 µl
EHS1200-C12-2.0	2 mm thick, 12 sample	45 µl
EHS1200-C16-2.0	2 mm thick, 16 sample	32 µl
EHS1200-C25-2.0	2 mm thick, 25 sample	20 µl

Preparative Combs

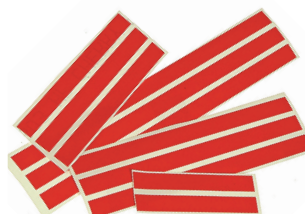
Code	Description	Sample volume
EHS1200-P1-0.8	0.75 mm thick, prep 1, marker 1	270 µl
EHS1200-P2-0.8	0.75 mm thick, prep 2, marker 2	118 µl
EHS1200-P4-0.8	0.75 mm thick, prep 4, marker 2	57 µl
EHS1200-P1-1.0	1 mm thick, prep 1, marker 1	360 µl
EHS1200-P2-1.0	1 mm thick, prep 2, marker 2	158 µl
EHS1200-P4-1.0	1 mm thick, prep 4, marker 4	77 µl
EHS1200-P1-1.5	1.5 mm thick, prep 1, marker 1	540 µl
EHS1200-P2-1.5	1.5 mm thick, prep 2, marker 2	236 µl
EHS1200-P4-1.5	1.5 mm thick, prep 4, marker 4	115 µl
EHS1200-P1-2.0	2 mm thick, prep 1, marker 1	720 µl
EHS1200-P2-2.0	2 mm thick, prep 2, marker 2	315 µl
EHS1200-P4-2.0	2 mm thick, prep 4, marker 4	153 µl

Microtiter Combs

Code	Description	Sample volume
EHS1200-CMT10-0.8	0.75 mm thick, 10 sample MC	20 µl
EHS1200-CMT20-0.8	0.75 mm thick, 20 sample MC	10 µl
EHS1200-CMT10-1.0	1 mm thick, 10 sample MC	27 µl
EHS1200-CMT20-1.0	1 mm thick, 20 sample MC	14 µl
EHS1200-CMT10-1.5	1.5 mm thick, 10 sample MC	41 µl
EHS1200-CMT20-1.5	1.5 mm thick, 20 sample MC	20 µl
EHS1200-CMT10-2.0	2 mm thick, 10 sample MC	54 µl
EHS1200-CMT20-2.0	2 mm thick, 20 sample MC	27 µl

Replacement parts & Accessories

Code	Description
EHS1200-TRAY7	Gel casting tray, 10x7 cm
EHS1200-TRAY10	Gel casting tray, 10x10 cm
EHS1200-DAM	Casting dams, pk/2
EHS1200-POS	Positive electrode cassette (red)
EHS1200-NEG	Negative electrode cassette (black)
EHS1200-LG	Adhesive loading guides
EHS1200-BUFSAVE	Buffer saving blocks, pk/2 (saves 100 ml of buffer)
EHS1200-COOL	Cool-pack and platform
EHS1200-SCOOP	Gel scoop, 10 cm



Loading guides allow easy well identification and sample loading



Artistic in science

Consort bvba
Parklaan 36
B-2300 Turnhout
Belgium

Telephone [\(+32\) \(0\)14 41 12 79](tel:+322014411279)
Email info@consort.be
Sales sales@consort.be
Support support@consort.be
Website www.consort.be